



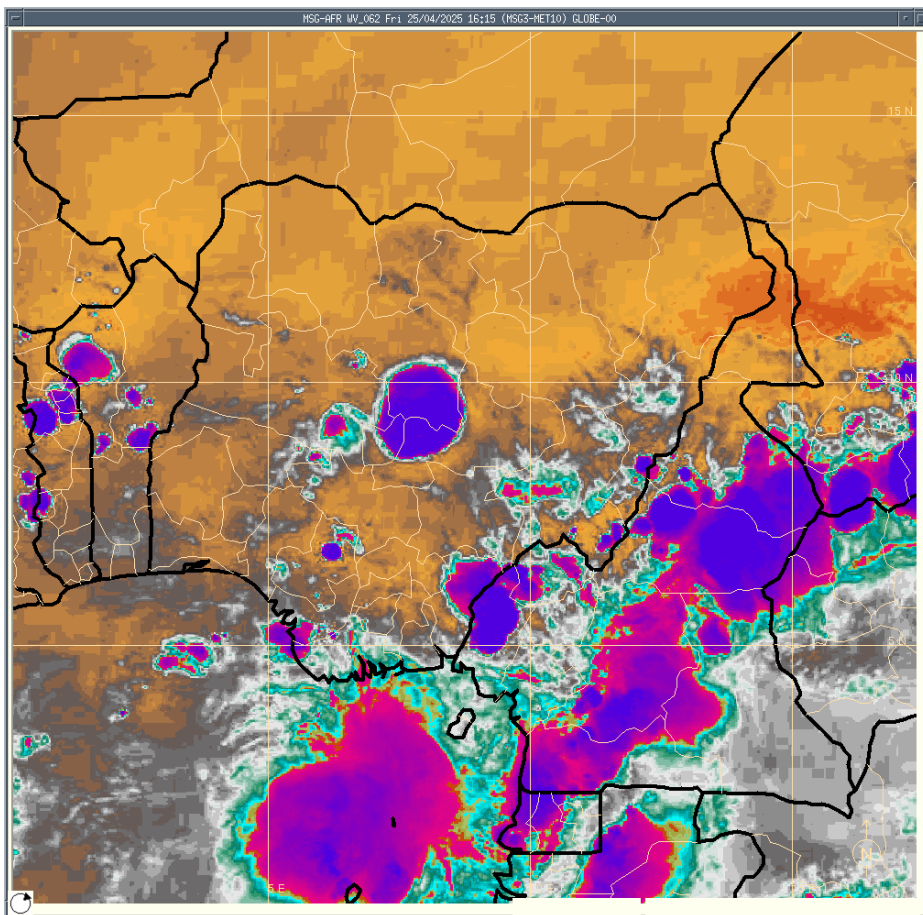
NIGERIAN METEOROLOGICAL AGENCY

Central Forecast Office (CFO)

WEATHER ALERT ISSUED ON 25.04.2025 AND

VALID 17:30 25.04.2025 TO 23:59 25.04.2025

SYNOPSIS: Active Cold Cloud is currently been observed over parts of Southern Kaduna and Nasarawa state in the central region and the Cameron mountains.



FORECAST OUTLOOK:

The storm is expected to propagate to affect parts of the Federal Capital Territory, Nasarawa, Kogi, Kwara, Ekiti, Osun, Ogun, Lagos, Oyo Taraba and Adamawa states in the next 1-5 hours.

Advisory:

- i. Strong winds may precede the rains in areas where thunderstorms are likely to occur, public should take adequate precaution.
- ii. Airline operators are advised to get airport-specific weather reports (flight documentation) from NiMet for effective planning in their operations.
- iii. Residents are advised to stay informed through weather updates from NiMet. Visit our website www.nimet.gov.ng